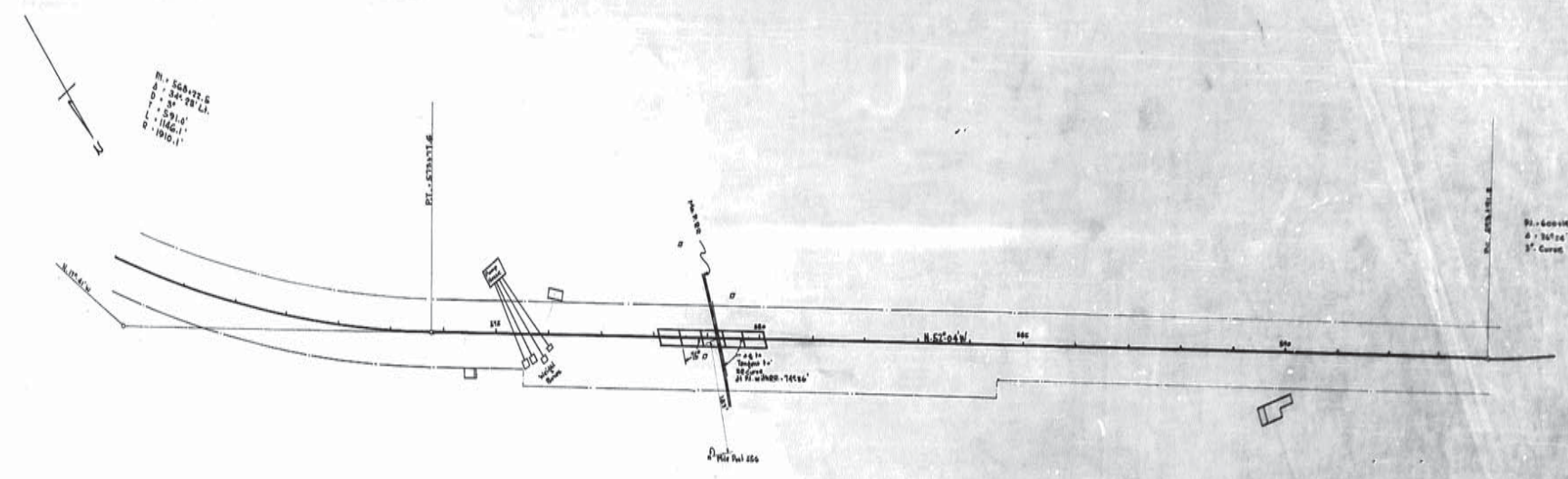


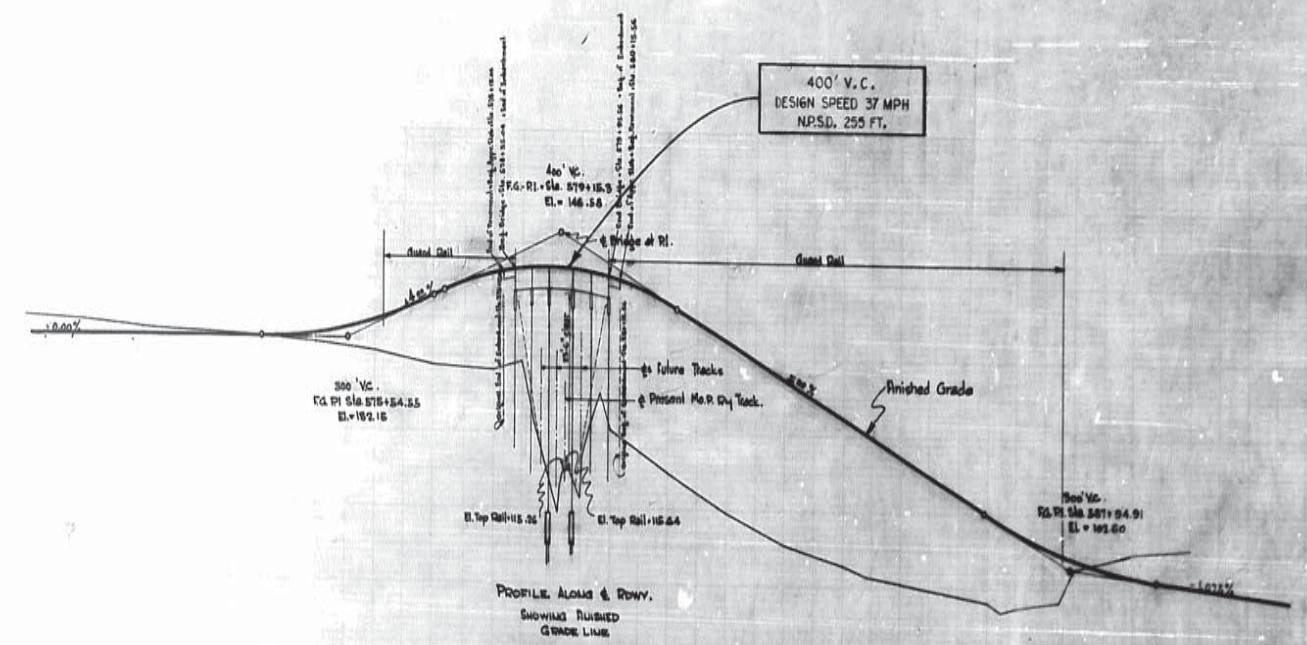
17

5000 414 LaSalle 1951 2 10



Handwritten notes and signatures in the left margin.

Vertical scale markings: 90, 100, 110, 120, 130, 140, 150.



PROFILE ALONG & ROWY. SHOWING FINISHED GRADE LINE

Note: Ground Contour is to be constructed as part of 194-188-A

FOR INFORMATION PURPOSES ONLY

PLAN & PROFILE
MO. R. RR. OVERPASS
TROUT-TULLOS HIGHWAY
LA SALLE PARISH
LOUISIANA HIGHWAY COMMISSION
 Baton Rouge, La.
 Scale: 1" = 100' Vert. 1" = 100' Horiz.
 May 1951

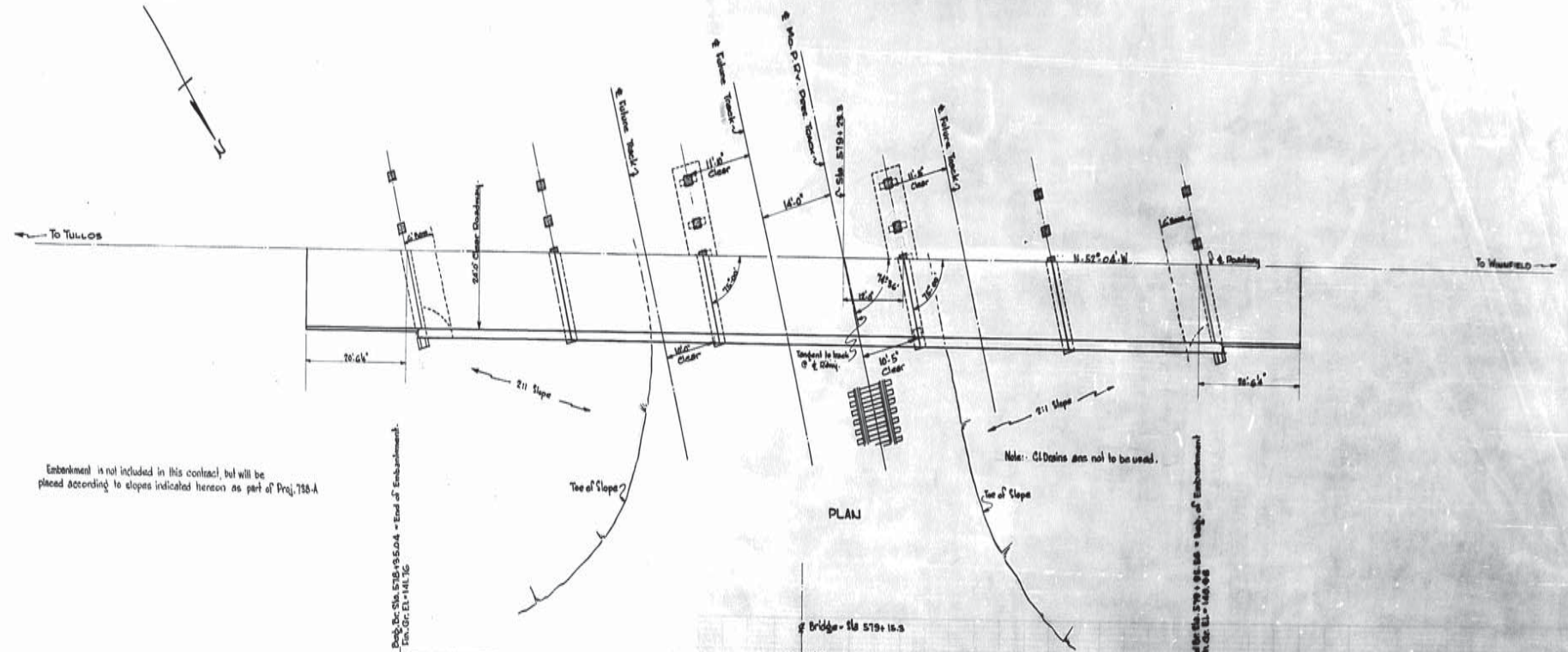
510 511 512 513 514 515 516 517 518 519 520 521 522 523 524 525 526 527 528 529 530



FINAL TRACINGS

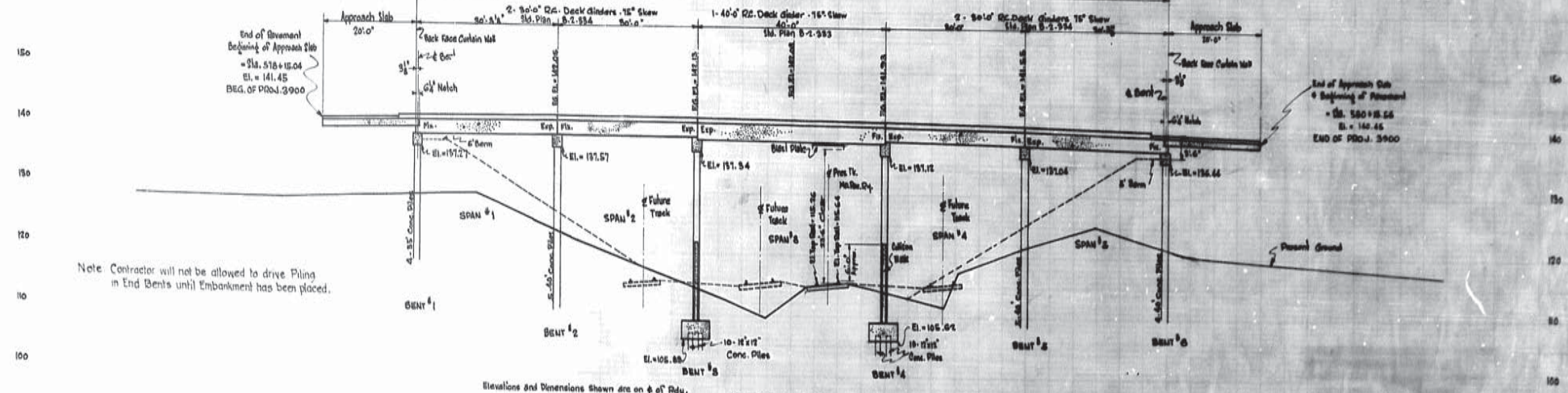
18

STATE	OFFICIAL PROJECT NO.	SECTION	YEAR	SHEET NO.	TOTAL SHEETS
9800	414	LaSalle	1951	3	10



Embankment is not included in this contract, but will be placed according to slopes indicated hereon as part of Proj. 738-A

DESIGNED BY	PROJECT NO.	DATE
CONTRACT NO.	SECTION	



Note: Contractor will not be allowed to drive Piling in End Bents until Embankment has been placed.

Elevations and Dimensions shown are on \pm of Rdy.

- For Details of Bents 1-2-3 & 6 see Sheet #4
- • • • • 5 & 6 • • • • • 4.5
- • • • • Approach Slabs • • • • • 4.6
- • • • • Camber & Steel Plates • • • • • 4.7

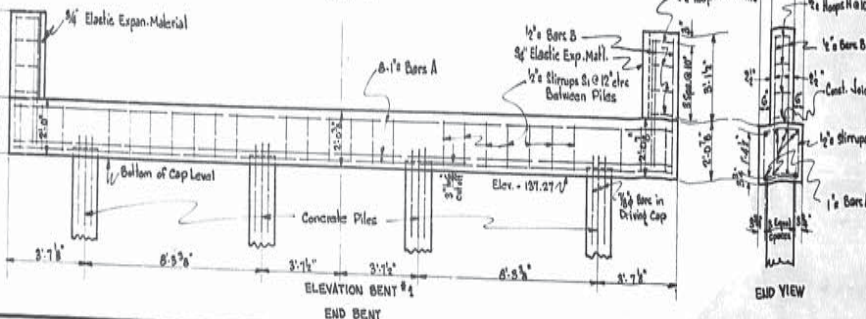
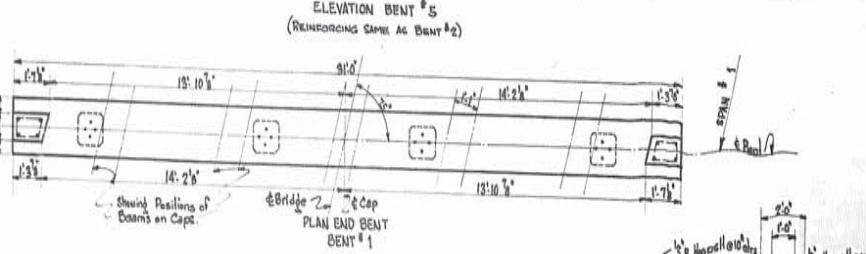
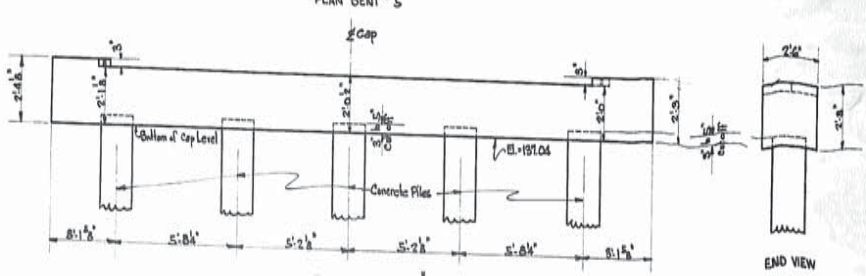
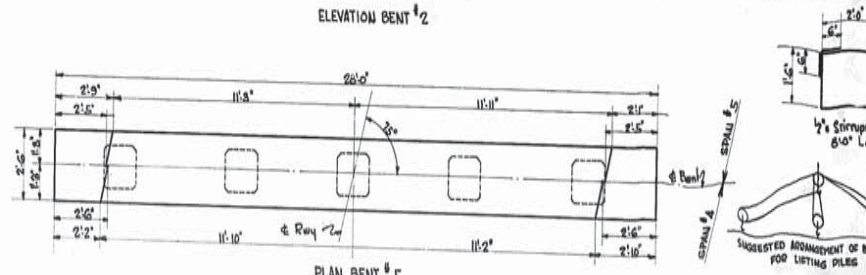
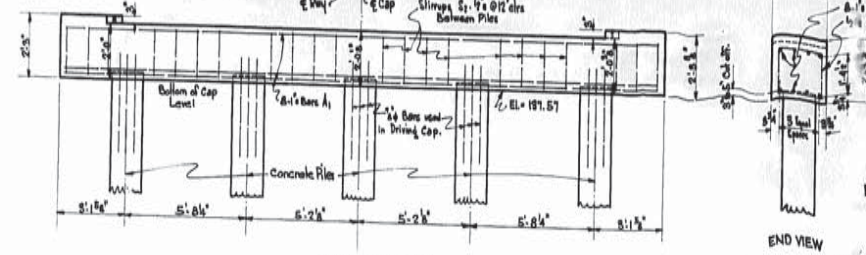
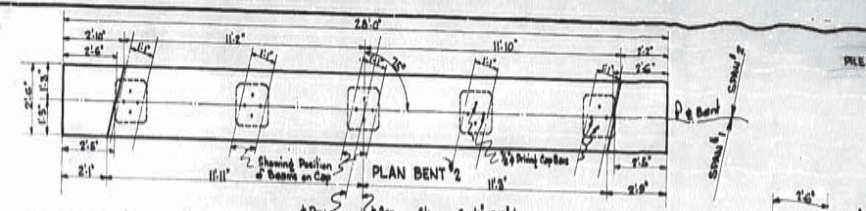
GENERAL PLAN
MO. P. R.R. OVERPASS
TROUT-TULLOS HIGHWAY
LA SALLE DARDEN
LOUISIANA HIGHWAY COMMISSION
Baton Rouge, La.
Scale: 1"=40'-0"
May 1951

EXHIBIT "A"

FINAL TRACINGS



19



PILE LOADINGS: DL OF SUPERSTRUCTURE + 1.1 (No Impact) + CAP + 25 TONS PER PILE - INTERMEDIATE BENT.
 + 19 + - END BENT.

BILL OF MATERIAL FOR ONE INTERMEDIATE BENT CAP

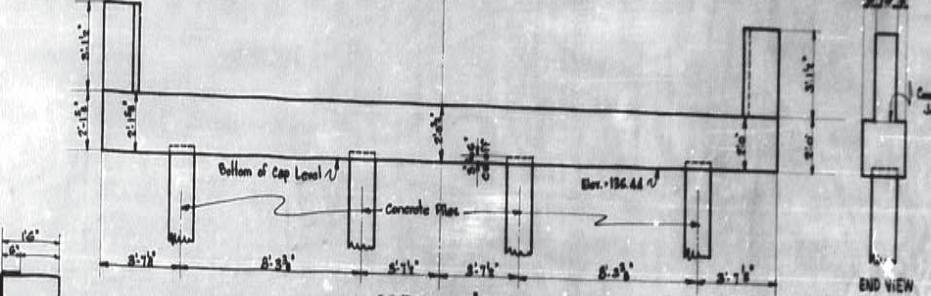
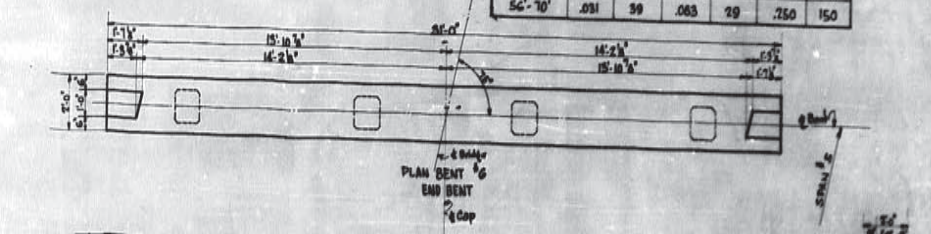
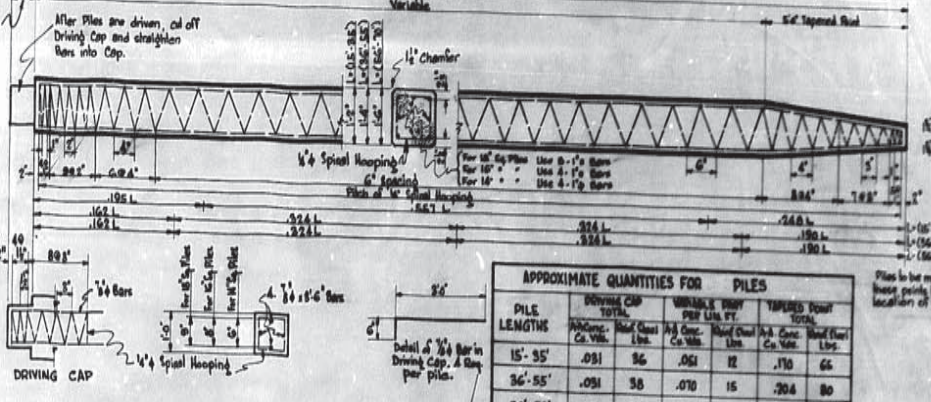
Mark	Size	No.	Length	Total Length	Location
A	1" x 8"	8	210'	0	Length in Cap
Total 1" Bars = 768'					
S	1/2" x 8"	8	0	170'	Stirrups in Cap
Total 1/2" Bars = 150'					
TOTAL REINFORCING STEEL = 900'					
TOTAL CLASS 'A' CONCRETE IN BENT #2 = 5.84 Cu Yds.					
TOTAL CLASS 'A' CONCRETE IN BENT #5 = 5.41 Cu Yds.					

BILL OF MATERIAL FOR ONE END BENT CAP

Mark	Size	No.	Length	Total Length	Location
A	1" x 8"	8	246'	0	CAP
Total 1" Bars = 864'					
B	1/2" x 8"	4	6	96'	VERT. IN PILES
H	1/2" x 8"	4	8	91'	HORZ. IN PILES
S	1/2" x 8"	26	7	182'	STIRRUPS IN CAP
Total 1/2" Bars = 255'					
TOTAL CLASS 'A' CONCRETE IN BENT #1 CAP = 5.01 Cu Yds.					
TOTAL CLASS 'A' CONCRETE IN BENT #6 CAP = 5.08 Cu Yds.					
TOTAL REINFORCING STEEL IN ONE END BENT CAP = 1155'					

APPROXIMATE QUANTITIES FOR PILES

PILE LENGTHS	DRIVING CAP TOTAL		TAPERED POINT TOTAL	
	Volume Cu Yds.	Weight Lbs.	Volume Cu Yds.	Weight Lbs.
15'-35'	.081	96	.061	72
36'-55'	.091	98	.070	84
56'-70'	.081	99	.083	100



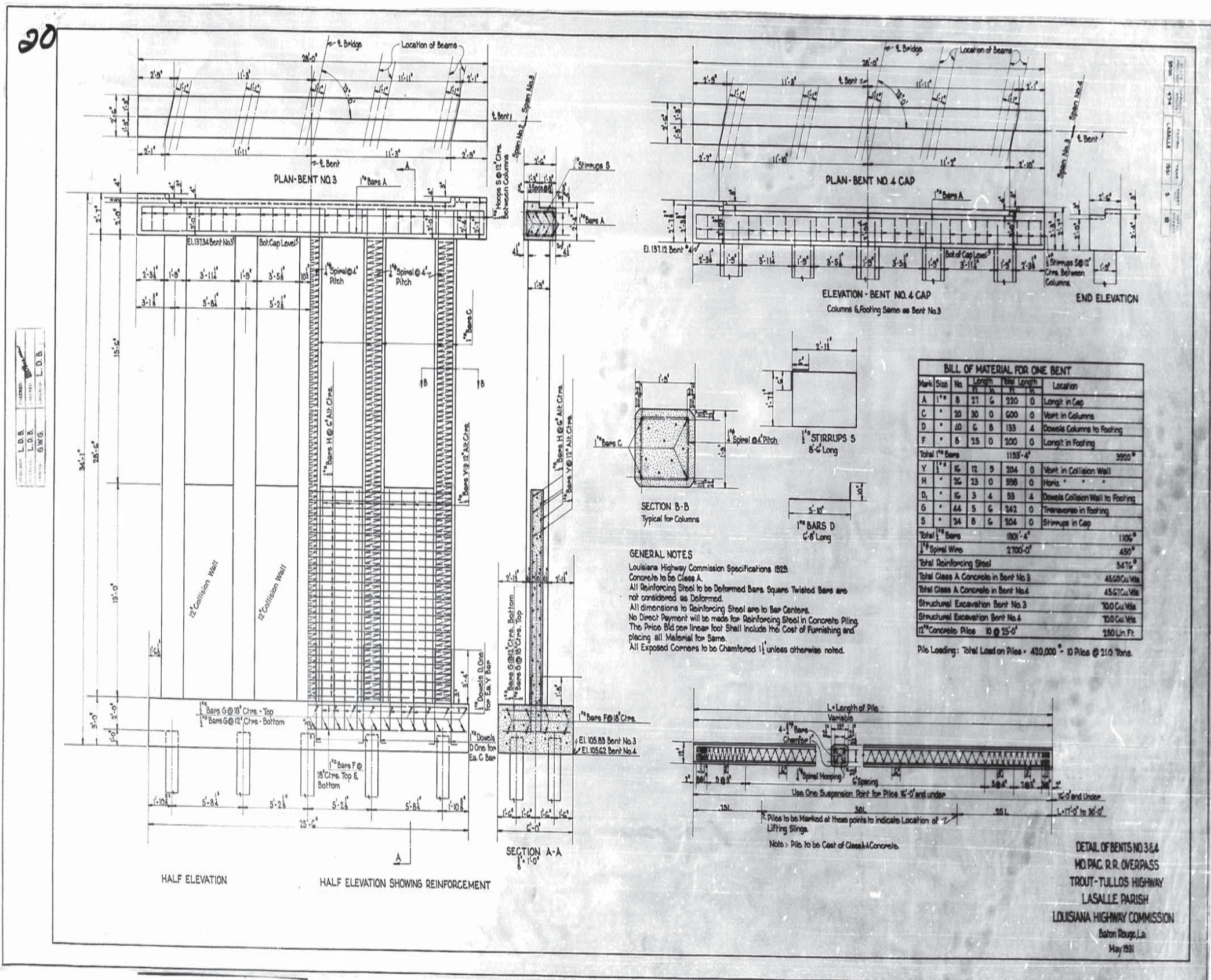
General Notes:
 Louisiana Highway Commission Specifications 1979
 Concrete to be Class 'A' in Caps
 All reinforcing steel to be deformed bars.
 Square headed bars not considered as deformed.
 All dimensions to reinforcing are to centers of bars.
 No direct payment will be made for reinforcing steel in concrete piling.
 The price bid per unit of piling shall include the cost of furnishing and placing all material for same.
 Chamfer all exposed corners 1/2" unless otherwise noted.
 12" Piles or smaller will be constructed of Class A-A Concrete.

**DETAIL OF PILE BENTS 1-2-5-6 G
 OVERPASS OVER MO. P. R.R.
 TROUT-TULLOS HIGHWAY
 LA SALLE PARISH
 LOUISIANA HIGHWAY COMMISSION**
 Scale: 1/4" = 1'-0" Baton Rouge, La. June 1971

L.D.B. L.D.B. L.D.B. L.D.B. L.D.B.
 L.D.B. L.D.B. L.D.B. L.D.B. L.D.B.

FINAL TRACINGS





20

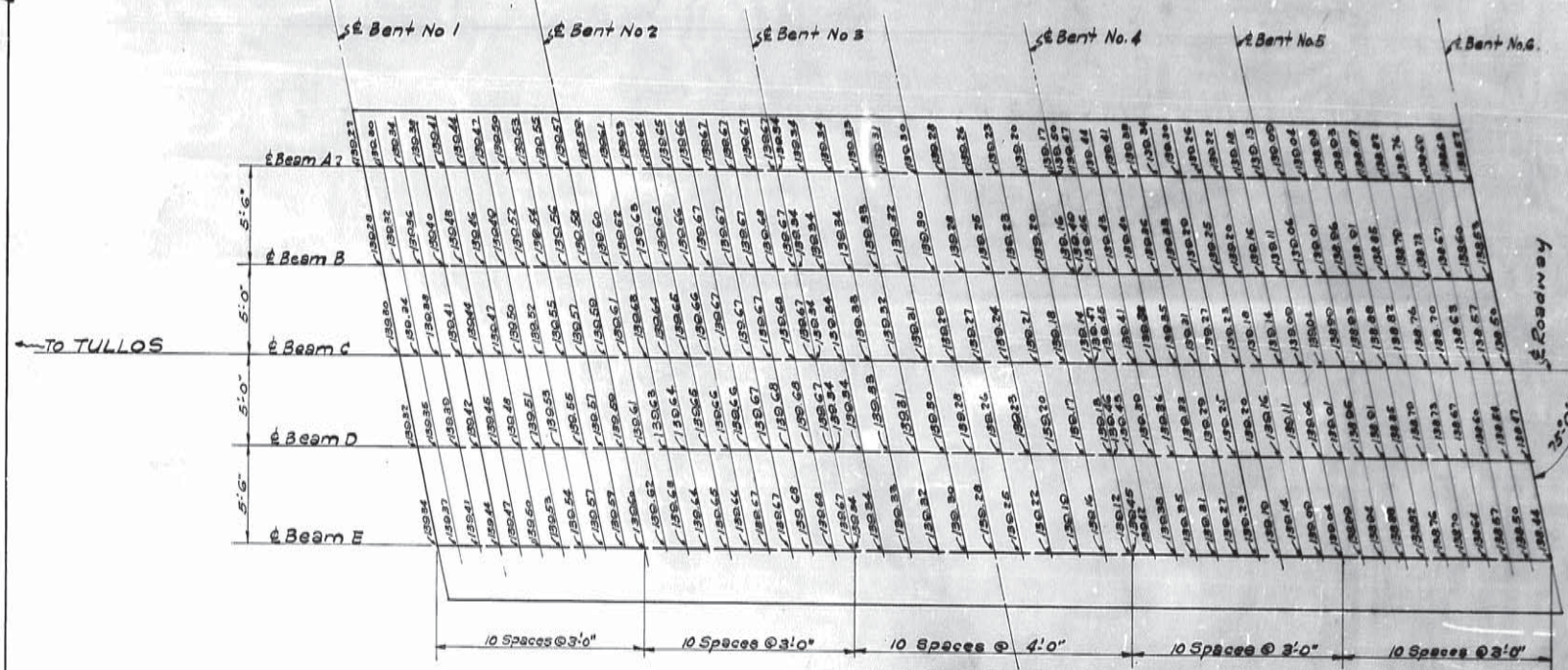
DESIGNED BY L.D.B.
CHECKED BY L.D.B.
DRAWN BY G.W.G.
SCALE 1/4" = 1'-0"

FINAL TRACINGS

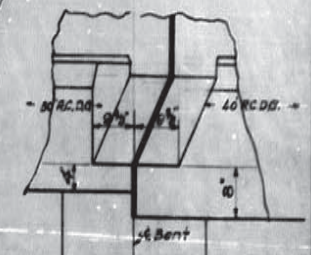


22

DATE	DESCRIPTION	BY	YEAR	SHEET	TOTAL
1931	114	LaSalle	1931	7	10

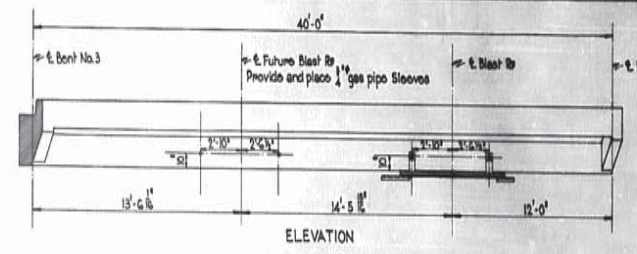
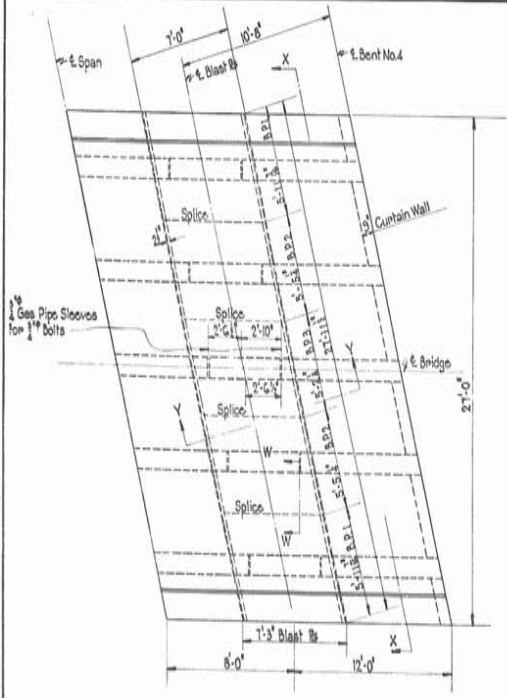


CAMBER PLAN
Showing Elevations at Bottom of Beams.

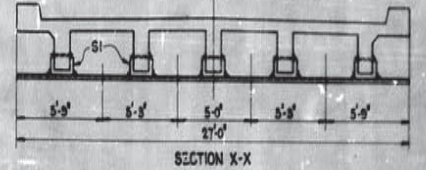


PART ELEVATION BENTS 344
(Showing Dimensions for Brackets)

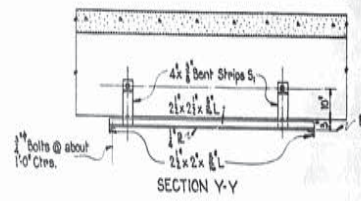
DESIGNED BY
W.A.Z.
CHECKED BY
G.W.G. & J.V.L.



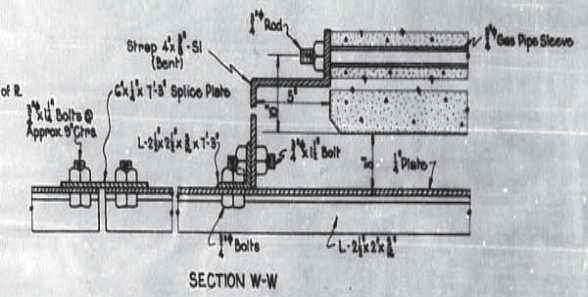
ELEVATION
Showing Position of Blast Rib



SECTION X-X



SECTION Y-Y



SECTION W-W

Fabricated Structural Steel (Estimate) = 3000 lbs.
All Material used in Blast Plate Detail is Classed as
Structural Steel. Paint Blast Plates with one coat of
Red Lead and one coat of Black Graphite. Apply one
good coat of 'Kroddproof' or equivalent to Top and
Bottom of Plates.

SPECIAL DETAILS
MO. PAC. R.R. OVERPASS
TROUT-TULLOS HIGHWAY
LASALLE PARISH
LOUISIANA HIGHWAY COMMISSION
Baton Rouge, La.
May 1931

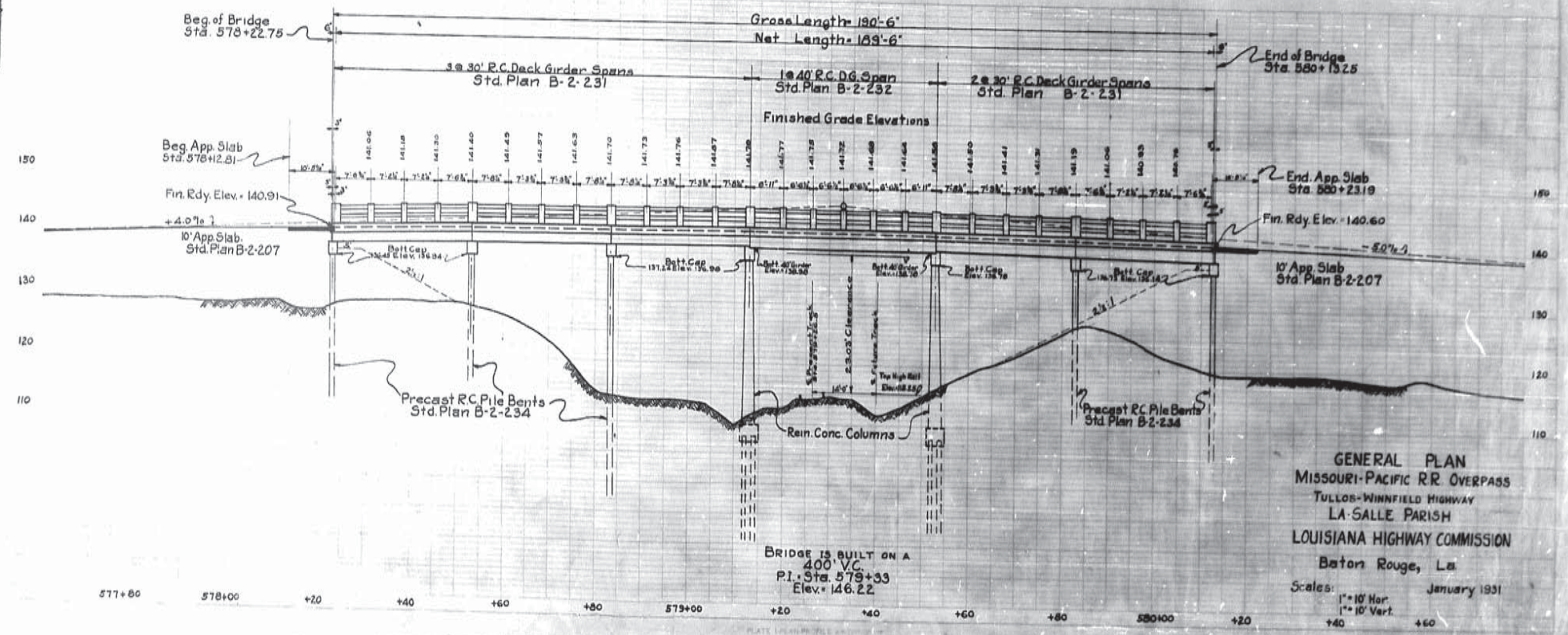
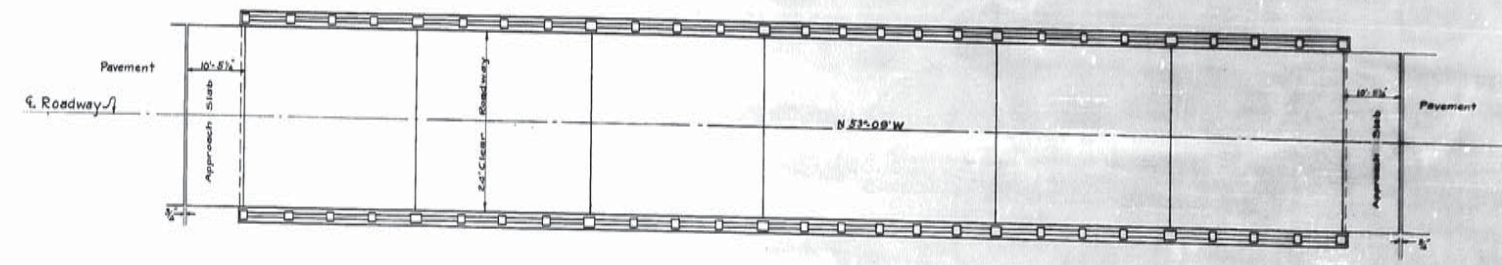
FINAL TRACINGS



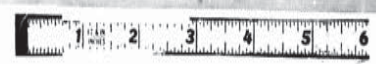
23

STATE	OFFICIAL ROUTE	PROJECT	YEAR	PROJECT NO.	TOTAL SHEETS
LA	474	LA SALLE	1931		

12-16-03
New

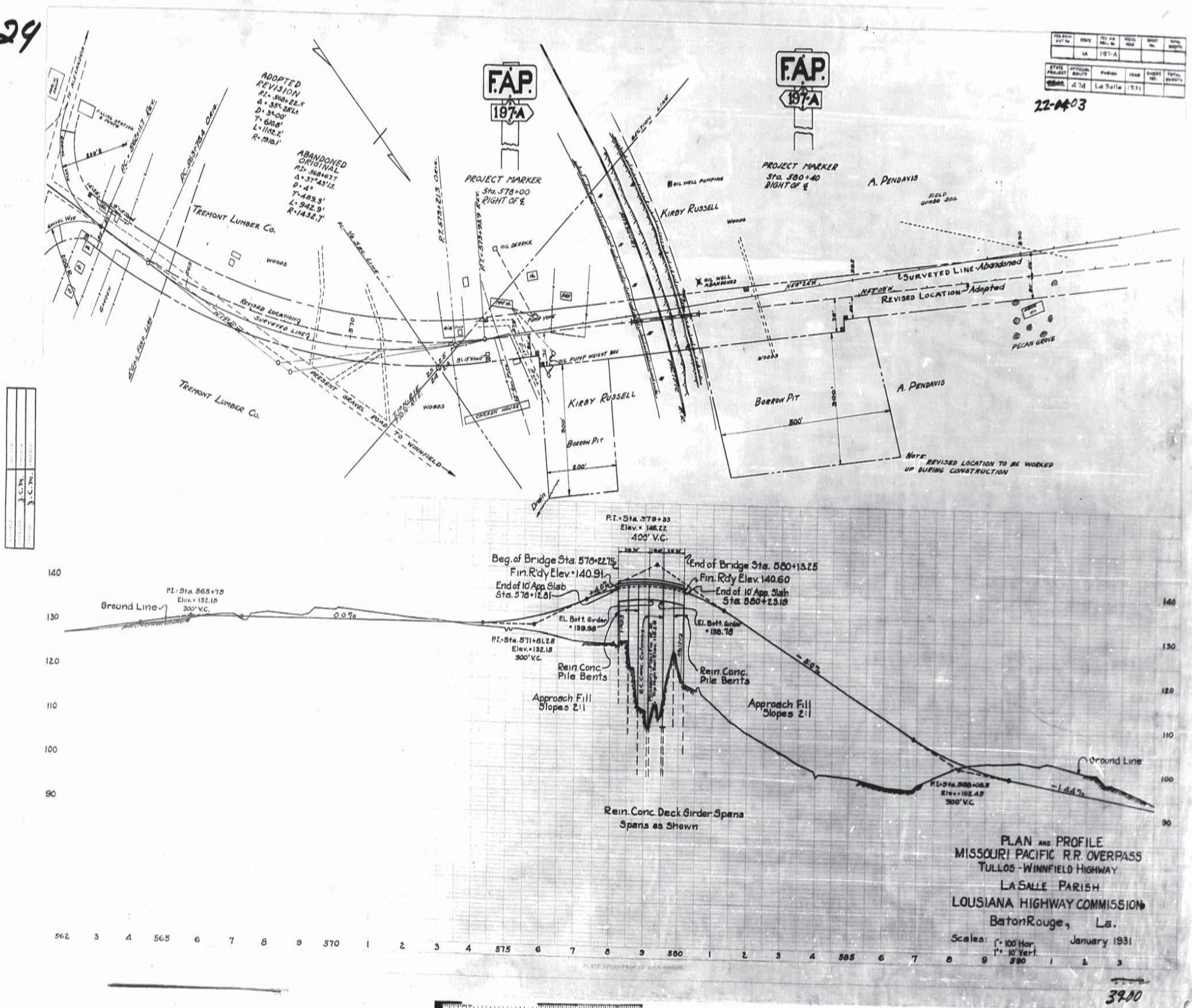


FINAL TRACINGS



3100

29



FINAL TRACINGS

3900